



MOWBRAY HEIGHTS PRIMARY SCHOOL

Issue No. 19 24th June 2020

Dear Families

The Department of Education has released updated government primary and combined (district) school intake areas, to apply from Term 1, 2021. These updated intake areas will only apply to families who enrol a child in a government primary or combined (district) school from Term 1, 2021.

Intake areas ensure that every Tasmanian child can enrol at a high quality government school close to where they live. Attending a school close to home gives children a great opportunity to become part of a strong, diverse and supportive local community. Intake areas also help to ensure schools have the facilities and staff to best support their students' learning.

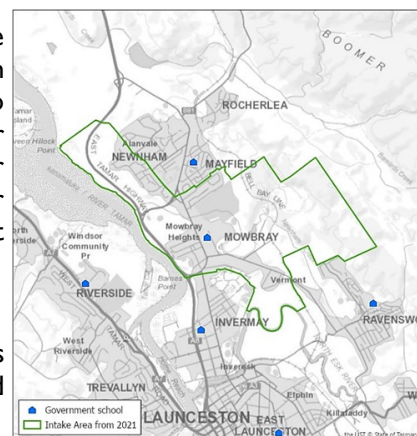
Our MHPS Intake Area has changed slightly and will take effect from Term 1, 2021.

For parents and carers with children already enrolled in our school, the updated intake areas do not apply to your family. If your child has a brother or sister who hasn't started school yet, they can still enrol at our school. As mentioned above, the updated intake area will only apply to families who enrol a child in a government primary or combined (district) school from Term 1, 2021.

Families can apply to enrol their child outside of their intake area if that school has the capacity to enrol additional 'out-of-area' students. Schools cannot guarantee an enrolment will be accepted. There is a consistent and fair procedure for schools to follow when assessing 'out-of-area' enrolment requests. This procedure applies for families who are wanting to enrol their children at MHPS and are not living in our intake area. This also includes families who have children currently attending our Launching into Learning programmes who are not living in our intake area. The first step for applying for an 'out-of-area' enrolment is an Expression of Interest Form.

At this stage, MHPS does not have the capacity to enrol 'out of area' students.

If you have questions related to the Intake Area Review and to view our school's updated intake area please visit the [DoE Intake Area webpage](#). Here you will also find answers to [Frequently Asked Questions](#).



Sharon

Unwell Students

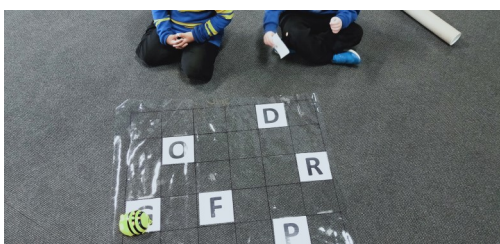
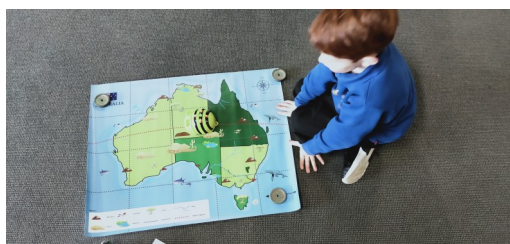
Children should not be sent to school or childcare if they feel unwell with COVID-19 symptoms, flu symptoms or any other symptoms of infectious diseases including: fever, runny nose, cough, sore/itchy throat, shortness of breath.

Children should stay home and you should phone your GP or the Public Health Hotline on 1800 671 738 for a referral to be tested for COVID-19 or to gain medical clearance from a doctor. Children should only be returning to school or childcare once their cold/flu like symptoms have passed.

Programmers at Work

Our Prep classes, along with a group of Year 3/4 students, have been testing their programming skills over the last few weeks. The Prep classes have used the BeeBots to complete a range of missions. They have been prepared to learn from their mistakes and have been resilient as they corrected their programs.

The students in the 3/4 group have been teaching themselves how to use a new set of equipment in our school. The Smith Family and James Riggall from Bitlink have given the school five sets of a robot kit called WeDo2. This clever team of programmers has worked through a sequence of designs and taught themselves the basic workings of different parts in the kits. Group members have been most supportive of each other and have willingly shared their knowledge as they made discoveries.



Diary

Wed 1st July	Mid-year Reports go home
Fri 3rd July	Year 3-6 DVD - Call of the Wild (PG) (Viewed in separate classrooms)
Fri 3rd July	Last day of Term 2
School Holidays Monday 6th July - Friday 17th July	
Mon 20th July	Professional Learning Day for staff (no school for students)
Tues 21st July	First day of Term 3 for students

Uniform News

Our MHPS Beanies have proven to be very popular, with the first 50 beanies sold out! There are another 150 on the way. Order forms can be collected from the Office. Beanies are for sale for \$10.00. All Uniform Orders are filled on Tuesday mornings and will be delivered to students in their classroom. The Uniform Cupboard is open from 8:45 - 9:30 am every Tuesday.



School Fire Education



The School Fire Education Program is continuing at MHPS. The School Fire Education Program is an initiative of the Tasmania Fire Service, as a strategy towards a vision of a Tasmanian community that is safe from the impact of fire.

The program has been designed to teach students from Kindergarten to Year 6 about basic home fire safety. Lessons and resources are delivered in schools by specially trained firefighters of the Tasmania Fire Service. Our program instructor is Firefighter Aaron.

Home fire safety resources are given out to students in class, and we encourage them to share the home fire safety messages with their family. Activity books are given out to students in Years 1 to 4, and can be taken home at the end of the program so that the whole family can participate in the activities to ensure their home is fire safe.

If you would like some more information please visit the website <https://www.tfseducation.com.au>.

Reporting

As mentioned in the Newsletter (Issue 16, 3/6/2020), the Tasmanian Department of Education is expecting that teachers in primary schools will have communicated with parents and carers, each student's wellbeing and level of learning achievement in English and Maths, by the end of July.

Learning achievement is to be recorded as *working towards the standard, at the standard or above the standard*. The communication is to also include the next steps in learning.

We will be providing written communication for our families. Mid-year reports will be sent home with Prep to Year 6 students on Wednesday 1st July.

Families of Kindergarten students will receive the Kindergarten Development Check I assessment. This will be sent home with Kindergarten students on Wednesday 1st July.

Families requiring a second report due to family separation are asked to let their child's class teacher know, if this situation has not already been communicated.

CONTACT DETAILS

Postal Address: PO Box 131, Mowbray Heights 7248
Email: mowbray.heights.primary@education.tas.gov.au

Street Address: 20-30 Cadorna Street, Mowbray Heights **Phone:** 6326 1892
Web: mowbrayheightsprimary.education.tas.edu.au